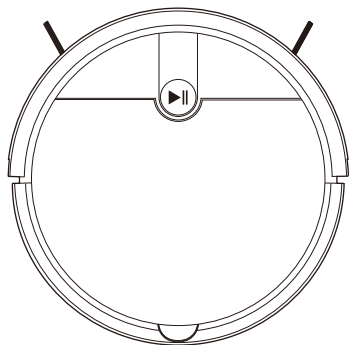


ILIFE-V2

Robotic vacuum cleaner

User Manual



For more detailed information,
please visit: www.iliferobot.com

ILIFE

Dear Customer,

Thank you for purchasing the ILIFE V2 Robotic Vacuum Cleaner!
You've joined the millions of people cleaning with robots - the smartest way to do it.

Please take a few moments to read through this manual and familiarize yourself with your robot to achieve the best performance. If you encounter any issues with your robot, feel free to contact our customer service or visit our website at www.iliferobot.com for further assistance. Stay connected with us on "X" to enjoy these exclusive benefits:

- Get tailored support for your specific robot, including answers to your questions, maintenance tips, video demonstrations, live chat, and more.
- Receive product updates and other valuable information, be among the first to discover new robots, exclusive discounts, and special promotions.

Connect with us now on
X: https://x.com/ilife_Global

Enjoy comprehensive cleaning every day! Best regards,
ILIFE Innovation

ILIFE Customer Service



service_asia@iliferobot.com (Asia)
service_au@iliferobot.com (Australia)

Table of Contents

Safety Instructions	3
Product Composition	5
Accessories List	5
Host Introduction	6
Robot Anatomy	7
Dustbin	8
Charging Dock	8
Remote Control	8
Product Specifications	10
Product Operating	11
Attentions	11
Charging Dock	13
Starting up/Pause/Sleep	15
Selecting Cleaning Modes	16
Maintenance	18
Cleaning Side Brushes	18
Cleaning Sensors & Charging Pins	18
Cleaning Dustbin & Filter	19
Replace Accessories Regularly	20
Troubleshooting	21
Error Code Sheet	21

Safety Instructions



Warnings

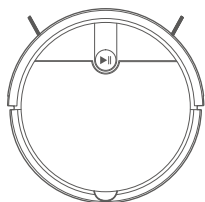
1. This robot should not be used by children under 8 years old or individuals with mental disorders, except under supervision. Do not let children sit on the robot or use it as a toy.
2. Act promptly if an error occurs during cleaning. Before using the robot, remove all power cords and small objects on the floor. Lift carpet fringes and ensure curtains and tablecloths are not in contact with the floor.
3. If there are suspended steps or stairs, please check if the robot can detect them before use. If not, install barriers to prevent falls and ensure the barriers do not cause harm to individuals.
4. Follow the instructions in this user manual. Use only factory-authorized or recommended accessories.
5. Ensure the charging dock voltage is compatible with the power supply voltage.
6. Use the robot indoors and in a household environment only. Do not use it outdoors or in commercial or industrial spaces.
7. Use only factory-authorized adapter and charging dock. Do not use non-rechargeable batteries. Refer to the "Product Specifications" section for battery standards details.
8. Do not immerse the robot in water or rinse it under the tap.
9. Do not clean the robot with a dripping wet cloth.
10. Do not use the robot on floors with stagnant water.
11. Do not use the robot near fire or fragile objects.
12. Keep cloth, human hair, fingers, or other body parts away from the robot's open or operating mechanism.
13. Do not use the robot on floors with stones or paper to avoid blockages.
14. Do not use the robot in areas with flammable substances such as gasoline, toner, etc., or to clean burning objects like cigarettes, ashes, or matches, or anything that could cause a fire.
15. Do not use damaged charging docks.
16. Do not lift the robot or charging dock by the power cord, and keep power cords away from heat and prevent them from getting caught around doors, edges, or corners.
17. Damaged power cords must be repaired by the manufacturer's repair service or certified technicians.

Safety Instructions

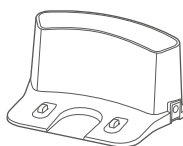
18. Install dustbin and filters properly before using the robot.
19. Do not use the robot in rooms where babies are sleeping.
20. Do not use damaged power cords or charging dock to recharge the robot.
Do not use the robot if it's damaged by falling down, or soaking in water.
21. Turn off the power switch if the robot will not be used for a long time.
22. Turn off the power switch before cleaning or maintaining the robot.
23. Unplug power cords from the charging dock before cleaning or maintaining the robot.
24. Remove battery before discarding the robot.
25. Robot and battery are to be disposed of according to local safety regulations.
26. Do not cremate the robot to avoid the explosion.
27. This equipment should be installed and operated with minimum distance of 20 cm between the radiator and your body.
28. Any changes or modifications not expressly approved by the grantee of this device could void the user's authority to operate the device.
29. Follow the instructions in this user manual.
The manufacturer is not liable for damages caused by improper use.

Product Composition

Accessories List



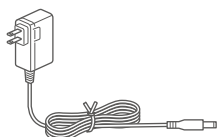
Main Body



Charging Dock



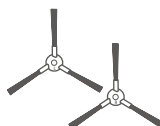
Remote control



Power Adapter



Cleaning Tool



Extra Side Brush X2



User Manual



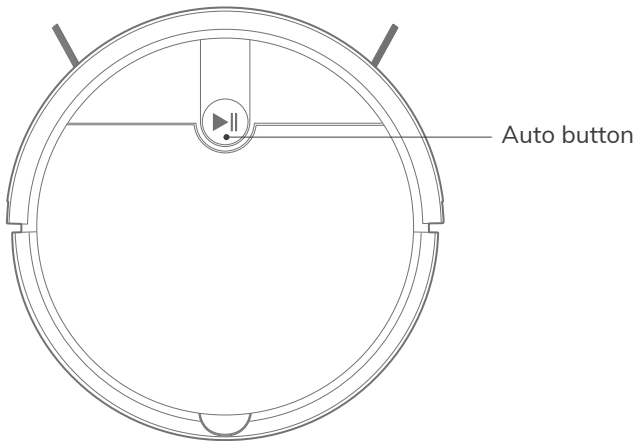
High Performance Filter



AAA Battery X2

Product Composition

Host Introduction

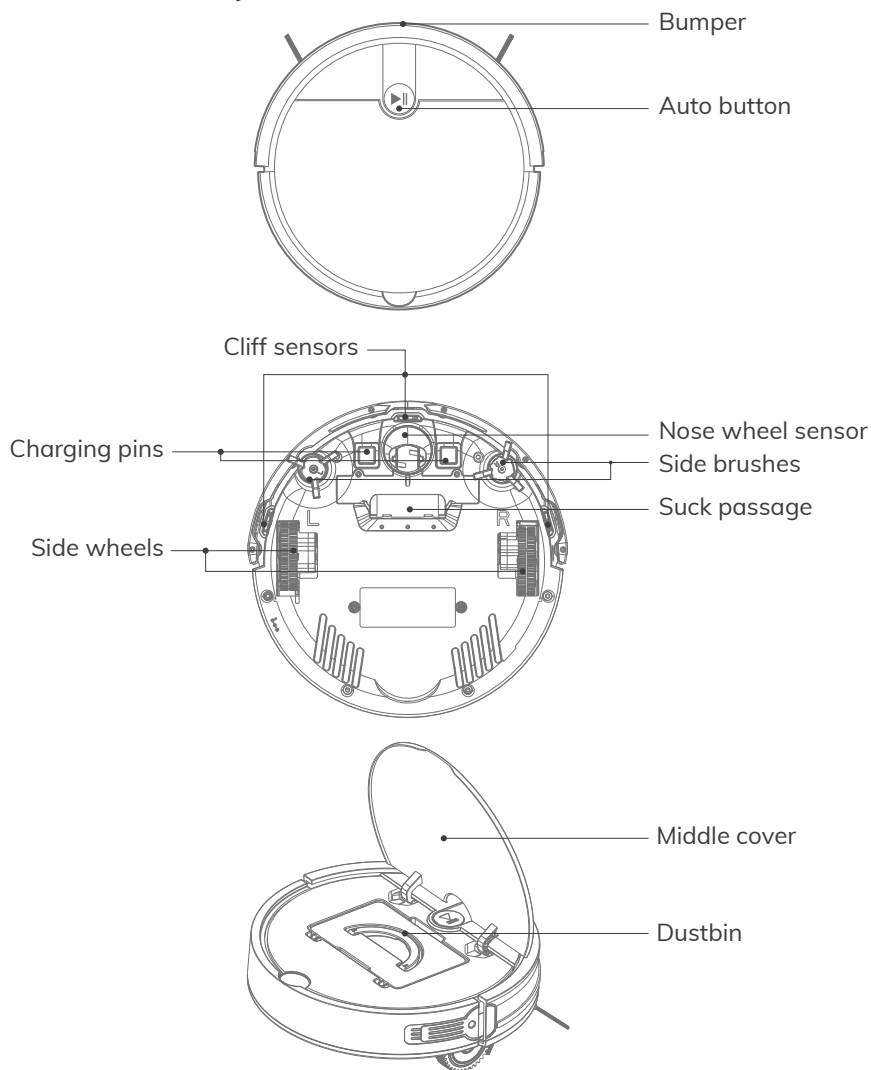


Button	Robot status	Operation	Functional description
Auto Button	Turn off	Press and hold for 3 seconds	Turn on the robot
	Turn on	Press the button once	Start / Pause
		Press the button twice	Enter recharge mode
		Press and hold for 8 seconds	Turn off the robot

Power indicator	Green	Electricity \geq 15%
	Orange	Electricity \leq 15%
	Red	Failure or abnormality

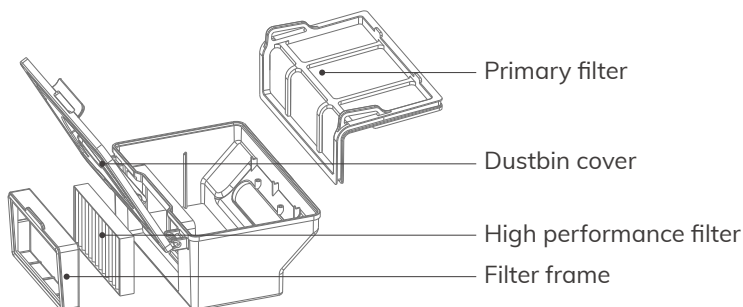
Product Composition

Robot Anatomy

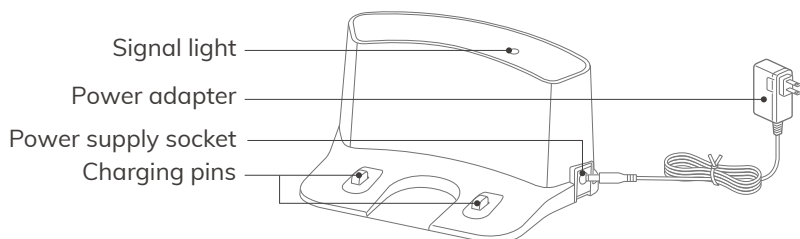


Product Composition

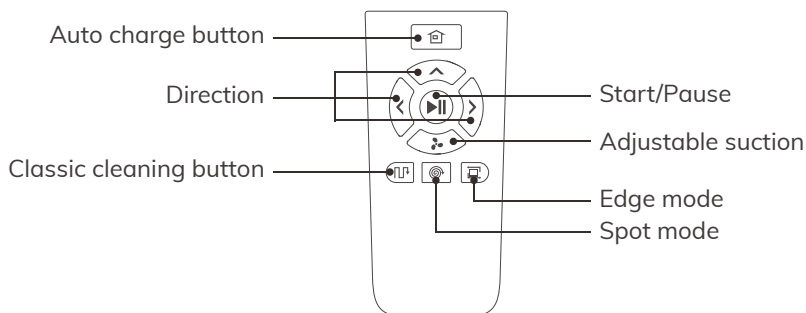
Dustbin



Charging Dock



Remote Control

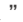


Product Composition


1 Starting up/Pause

- Press the button to switch the robot from sleep mode to idle mode.
- Press the button when in idle mode to start cleaning.
- Press the button to pause the robot during its operation.

2 Directional Buttons

A. “” button:

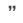
Press the button in sleep mode to move the robot forward.

B. “” button:

Press this button in work mode to switch to "super strong" suction power.

C. “” button:

Press the button and the robot will turn left.

D. “” button:

Press the button and the robot will turn right.



Note: “” cannot be used during a cleaning cycle.

3 Auto charge button

- Press the button and the robot will return to the charging dock for recharging.
- When the robot unit is on the charging dock, double-click this button to set the current time as the daily scheduled start time.
- When the robot unit is on the charging dock, press this button three times to cancel the scheduled setting.

4 Classic cleaning button

Press this button to start robot cleaning when it is under standby mode.

5 Spot button

Press this button to make the robot start spiral spot cleaning.

6 Edge button

Press this button to start edge cleaning when robot is under standby mode.



Note:

1. Install two AAA type batteries into the remote control.
2. Take out the batteries if the remote control is not used for long time.

Product Composition

Product Specifications

Item	Specification
Overall dimension	310x310x76mm
Net weight	2.15kg
Battery type	Li-ion
Charging type	Auto Charging / Manual Charging
Dustbin capacity	0.3L
Cleaning modes	Auto, Spot, MAX, Edge, Daily Schedule
Charging time	<300mins
Main body button type	Mechanical Button

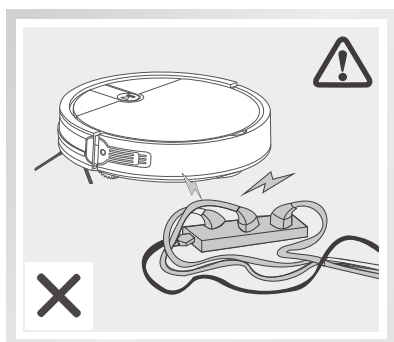


Note:
The company reserves the right of final decision on the interpretation of these terms and conditions.

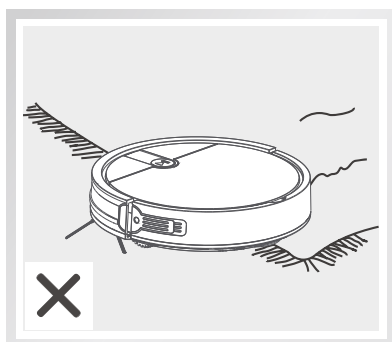
Product Operation

Attentions

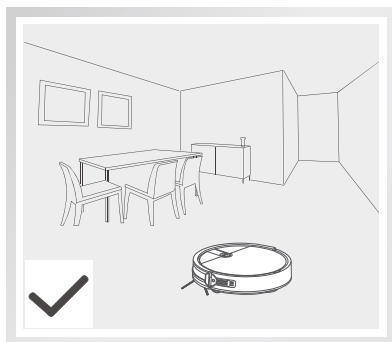
The robot may skip over some areas due to the complexity of the home environment. To achieve the best result, we suggest using it as daily routine and clearing up the obstructions on the floor before starting the robot.



Please move away the power cords and other objects that may tangle the robot before cleaning.



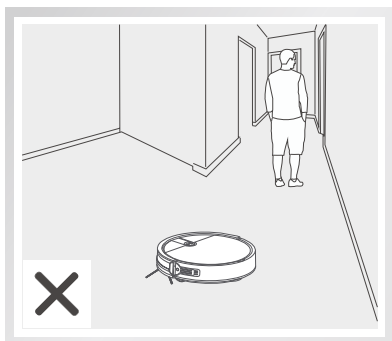
Please fold up the edges of the carpets before cleaning.



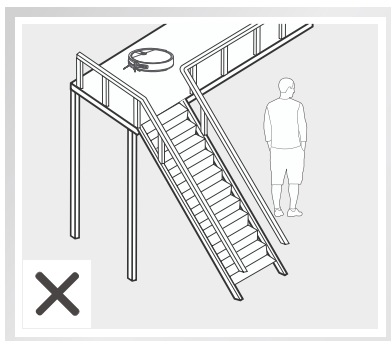
To avoid being stuck during cleaning, please arrange the furniture neatly.

Product Operation

Attentions



Please do not stand at somewhere with narrow space like the door sill or hallway in case of blocking the robot and skipping over some areas.



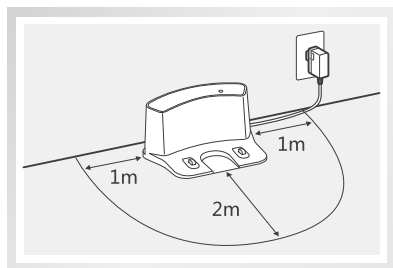
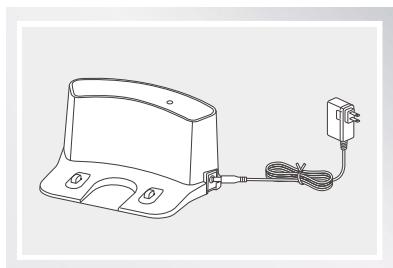
Please do not stand by downstairs when the robot is working upstairs in case of getting injured by any fallen objects.

Product Operation

Charging Dock

1 Placement of charging dock

- Connect the adapter to the charging dock.
- Placement of the charging dock: place it against the wall horizontally, and there should be no objects on the left and right sides within a one-meter radius and none in front within a two-meter radius. Also, there should be no reflective objects such as a mirror around the dock.
- Plug in the power.

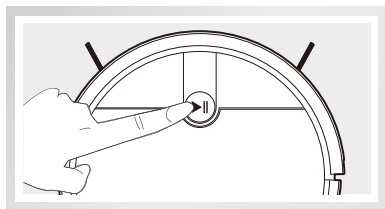


Reminder:

When the charging dock is connected to the adapter, the signal light of the dock will light up.

2 Turn on the robot

- Press the AUTO button for 3 seconds to turn on, and hold it for 8 seconds to turn off.




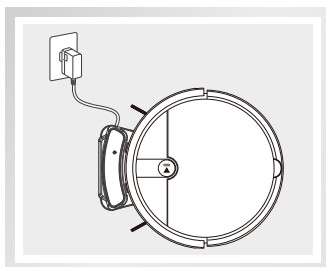
Note:

After the robot finishes its work, please do not turn it off, and fully recharge it for the next run.

Product Operation

3 Charging the robot

- In automatic cleaning mode, when the robot's battery is low, it will automatically start searching for the charging dock to recharge.
- In selection mode, press the  button on the remote control, and the robot will start searching for the charging dock to recharge.



Reminder:

Please keep the charging pins clean in daily use to ensure a good connection.



Reminder:

1. When using the robot for the first time, please charge it fully for 12 hours. After charging is complete, the display light will stay on constantly for a period and then turn off.
2. Please leave the robot on the charging dock for daily use and make sure that the charging dock is connected to the power.
3. If you won't use the robot for a long time, please fully charge it, turn off the power and keep it in a well-ventilated dry place.

Product Operation

Starting up/Pause/Sleep

Sleep mode: The robot display light is off, and the robot is stationary.

Selection Mode: The robot display light flashes, and the robot is stationary.

Cleaning mode: The robot is in operation, and the robot display light stays on constantly.

1. Starting up

- A. Press and hold the AUTO button on the robot for 3 seconds to wake up the robot.
- B. Press the AUTO button on the wake up or the AUTO button on the remote control to start the robot.



Note:

If the robot is in sleep mode, press the AUTO button on the robot or the AUTO button on the remote control to wake up the robot and enter selection mode. Press again, and the robot will start automatically.

2. Pause

To switch the robot from cleaning mode to selection mode, you can press the AUTO button on the robot or the AUTO button on the remote control to pause the robot.

3. Sleep mode

If there is no operation on the robot within 10 minutes, the robot will automatically enter sleep mode.

Product Operation

Selecting Cleaning Modes

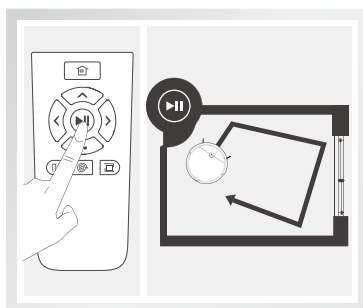
There are several cleaning modes to fit various floor conditions for deep cleaning. You can make a choice with the remote control.

1 Auto cleaning

The robot will clean a room automatically and adjust its cleaning according to the situation.

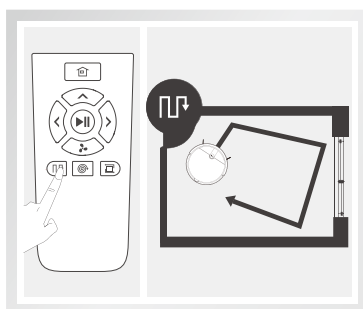


Reminder:
Press AUTO button on robot or
AUTO button on remote control
to start auto cleaning.




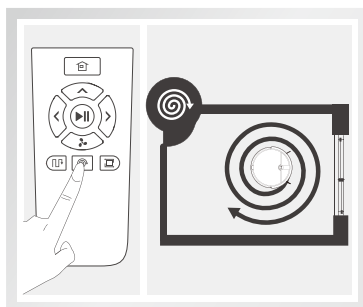
2 Classic Cleaning

Robot takes a straight cleaning and only turn its direction until it detects or encounters obstacles.




3 Spot mode

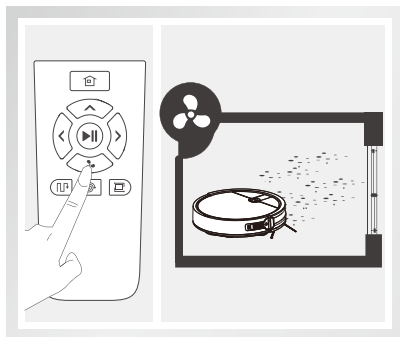
Place the robot near the required area, and then press the button  on the robot to start cleaning in Spot Mode.



Product Operation

4 MAX mode


When the robot is in automatic cleaning mode, press button  on the remote control to start cleaning with maximum suction power.

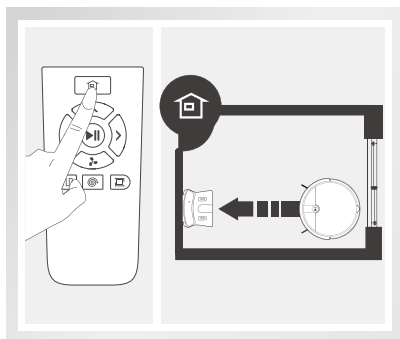


5 Auto charge mode


The robot can sense lower power during the cleaning process and automatically activate Self-charge Mode and search for the charging dock.

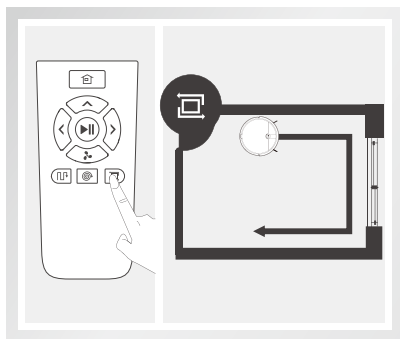


You can also use the button  on the remote control to command the robot to activate the mode.



6 Edge Mode

Place the robot near the required area, and then press button  on the remote control to start cleaning in Edge Mode.



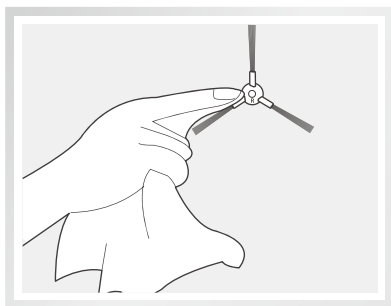
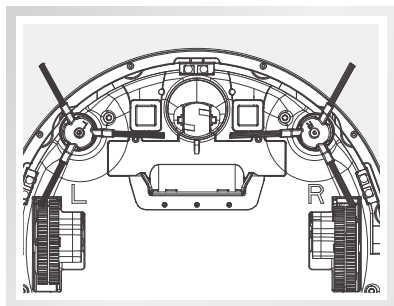
Maintenance



Reminder: Make sure the robot is turned off and adaptor is unplugged before accessories maintenance.

Cleaning Side Brushes

- Remove side brushes. Wipe clean with a clean cloth.
- When replacing the side brush, please distinguish the corresponding installation position of the "L" "R" side brush.

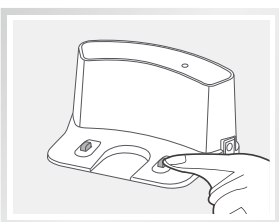
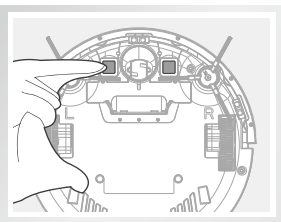
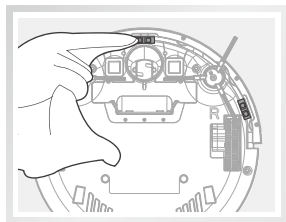


Cleaning Sensors & Charging Pins

Use cleaning tools or a soft cloth to clean the sensors and charging pins:

Note:

Remove dust or foreign objects on sensors and charging pins on the charging dock as soon as possible.

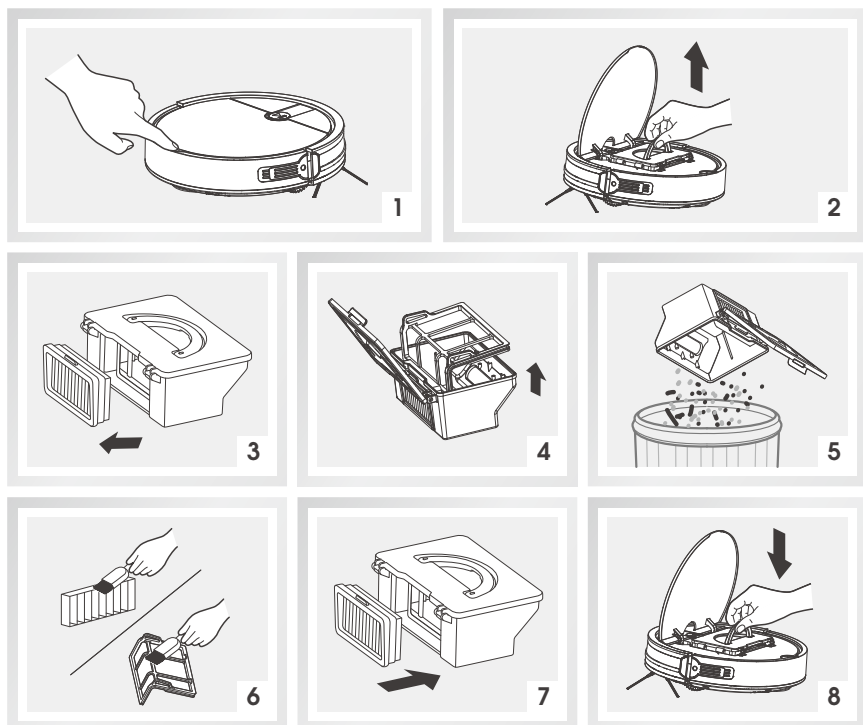


Maintenance

Cleaning Dustbin & Filter

Please clean the dustbin and filter after each use of the robot as instructed below.

- Remove the dustbin and check if there is any debris in the suction inlet, and then clean it.
- A primary filter is replaceable and should be washed with water after having been in use for about 15-30 days, after which it should be dried in a cool and well-ventilated place and not to be squeezed.
- High Performance Filter can not be cleaned with water.
To prolong the life of the filter it can be cleaned by shaking the filter.



Maintenance

Replace Accessories Regularly

Accessories	Maintenance	Replacement
Dustbin	After each use	N/A
High performance filter	Weekly (Twice a week for families with pets)	3-5 months interval
Spinning side brush	Weekly	Depends
Charging dock	Weekly	N/A

Troubleshooting

Error Code Sheet

The robot will remind you of malfunctions by emitting beeps.

- Short tone

NO.	Tone	Cause	Solution
01	•	Wheels or side brushes no work	Check wheels or side brushes
02	• •	Cliff sensor or bumper sensor failure	Clean cliff sensor and shake bumper slightly, check whether there is foreign matter
03	• • •	Main body gets stuck	Move main body and start again



Note:

If the above solutions do not solve the problem, please try the following:

1. First, press the AUTO button and hold it for 8 seconds to turn off the robot, then press the AUTO button and hold it for 3 seconds to turn on the robot.
2. If restarting the robot still does not solve the problem, please send the robot to the after-sales repair center for repair.

